

Noémie Goudal: Post Atlantica

27 January - 12 March 2022

Tuesday to Saturday 11am to 6pm



The inaugural exhibition at our gallery at 1 Little Titchfield Street, *Post Atlantica* is the most expansive exhibition to date of Noémie Goudal's eponymous series, following presentations of recent chapters at Le Grand Café Centre d'Art Contemporain, Musée Delacroix, Paris and Frieze London.

Goudal's body of work unravels an artistic dialogue with the field of paleoclimatology, analysing climate and geology from the vantage point of "deep time" to acquire an understanding of our planet's trajectory. Measured in millions of years, this timescale reveals geographies of landscapes to be momentary states in a cycle of continuous flux.

Goudal's practice is underpinned by rigorous research at the intersection of ecology and anthropology. Her works result from the construction of elaborate, illusionistic installations uncompromisingly staged within the landscape, documented using film and photography. *Post Atlantica* fluidly traverses the planet's most ecologically contrasting geographies, from tropical coastlines to swamplands, mountain ranges and theoretical macro perspectives of the earth's fundamental structure.

Occupying the main gallery, Goudal's freestanding four metre sculptural work appears to present a flat image of a densely interwoven jungle. As the viewer moves around the work, it is revealed to be a multi-layered three-dimensional installation, constructed of cut-out photographic prints suspended in space by metal frames. Cross-hatching photographs of palm groves from different geographies, the work references a theory on the timescale of the existence of the missing continent known as Geological Atlantis, speculating on how a rare species of palm tree (called "Phoenix Atlantica") came to exist exclusively in two locations on either side of the Atlantic Ocean.

In the rear ground floor gallery, a photographic triptych transports us to towering snow-capped mountains. The verticality of the mountain-ranges is interrupted by what initially seems to be a flat, right-angled section of smooth rock. Almost resembling a dam in

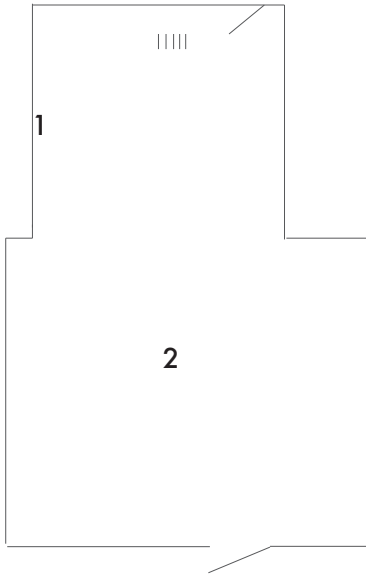
scale and texture, closer inspection reveals it to be a section of cardboard, with the resulting impression of a cross-section diagram of the mountain's inner composition. Goudal's intervention reflects on the discovery that the rock at the top of the French region of Morbihan reached its present location after a 300,000 year journey, at the start of which it was buried under a mountain as high as the Alps, known as the Armorican Massif.

Downstairs is Goudal's latest film, *Inhale, Exhale*. The film pivots on the question of how humans were able to cross the Arctic during the last ice age, 18,000 years ago, to reach the American continent. Recent evidence from the seabed points to the fact that the Bering Sea completely froze during this harsh period, creating a temporary land bridge allowing the passage of humans and other species. Inspired by these discoveries, the film choreographs an intervention staged in a marshland lake. Slowly, large-scale backdrops emerge from the water, accompanied by heavy mechanical sounds. As they are hoisted up, the backdrops, depicting images of vegetation drawn from the artist's archive, take up increasing space within the frame until they entirely transform the landscape, implying a pathway across the water. Finally, they gradually reimmerge themselves in the water and disappear completely. The film collapses geological and experiential time, visualising a landscape in a constant state of flux.

Exhibition scenography by Hélène Jourdan.

Goudal's upcoming institutional solo exhibitions include *Vitrine du Plateau* at Frac Ile de France (France), 2022 and *Post Atlantica* at Les Rencontres d'Arles (France), 2022. Recent solo institutional exhibitions include *Post Atlantica* at Le Grand Café Centre d'Art Contemporain (France), 2021; *Echos toujours plus sourds* at Musée Delacroix (France), 2021; *Kunstverein Hildesheim* (Germany), 2019. Goudal's work is held in public collections including Centre Pompidou, FOAM Museum, Fotomuseum Winterthur and Musée de la Roche-Sur-Yon. Goudal (b. 1984) graduated from the Royal College of Art (UK) in 2010 with an MA in Photography, and lives and works in Paris, France.

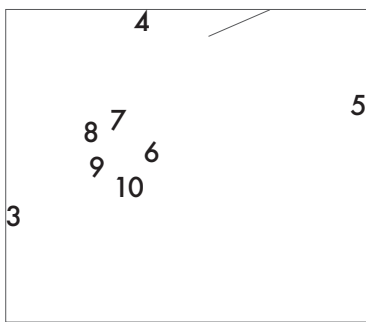
Noémie Goudal: Post Atlantica



Gallery 1

1. *Untitled (Waves)*, 2022, Inkjet prints on photographic paper and triple-channel HD video, 2:45 min, silent, 140 x 110 cm | 55 1/8 x 43 1/4 in. (each)

2. *Untitled (Giant Phoenix)*, 2022, Inkjet print on aluminium, metal structure, 350 x 350 x 350 cm | 137 3/4 x 137 3/4 x 137 3/4 in. (approx.)



Gallery 2

3-5. *Untitled (Mountains)*, 2021, Inkjet print, 150 x 116 cm | 59 1/8 x 45 5/8 in.

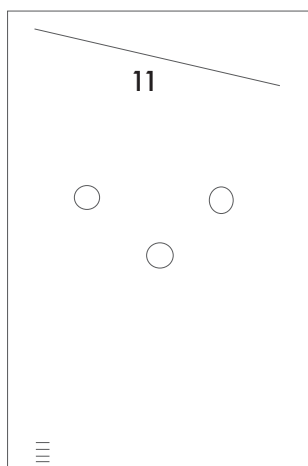
6. *La terre aplatie de Newton*, 2021, Porcelain, 25 cm | 27/32 in. diameter (each). On loan from the Manufacture Nationale de Sèvres, France.

7. *Les sphères croisées de Buridan*, 2021, Porcelain, brass, wood, 37 cm | 14 9/16 in. diameter. On loan from the Manufacture Nationale de Sèvres, France.

8. *Les montagnes attirées par les étoiles de Restoro D'Arezzo*, 2021, Porcelain, steel, 25 cm | 27/32 in. diameter. On loan from the Manufacture Nationale de Sèvres, France.

9. *Le réseau pentagonal d'Elie de Beaumont*, 2021, Porcelain, 25 cm | 27/32 in. diameter. On loan from the Manufacture Nationale de Sèvres, France.

10. *Les mondes intérieurs de Dante ou Les enfers de Dante*, 2021, Porcelain, brass, wood, 37 cm | 14 9/16 in. diameter. On loan from the Manufacture Nationale de Sèvres, France.



Gallery 3 (Basement)

11. *Inhale, Exhale*, 2021, Single-channel HD video, 8:16 min, sound.